

EMERGING CANVAS - EDITION IV

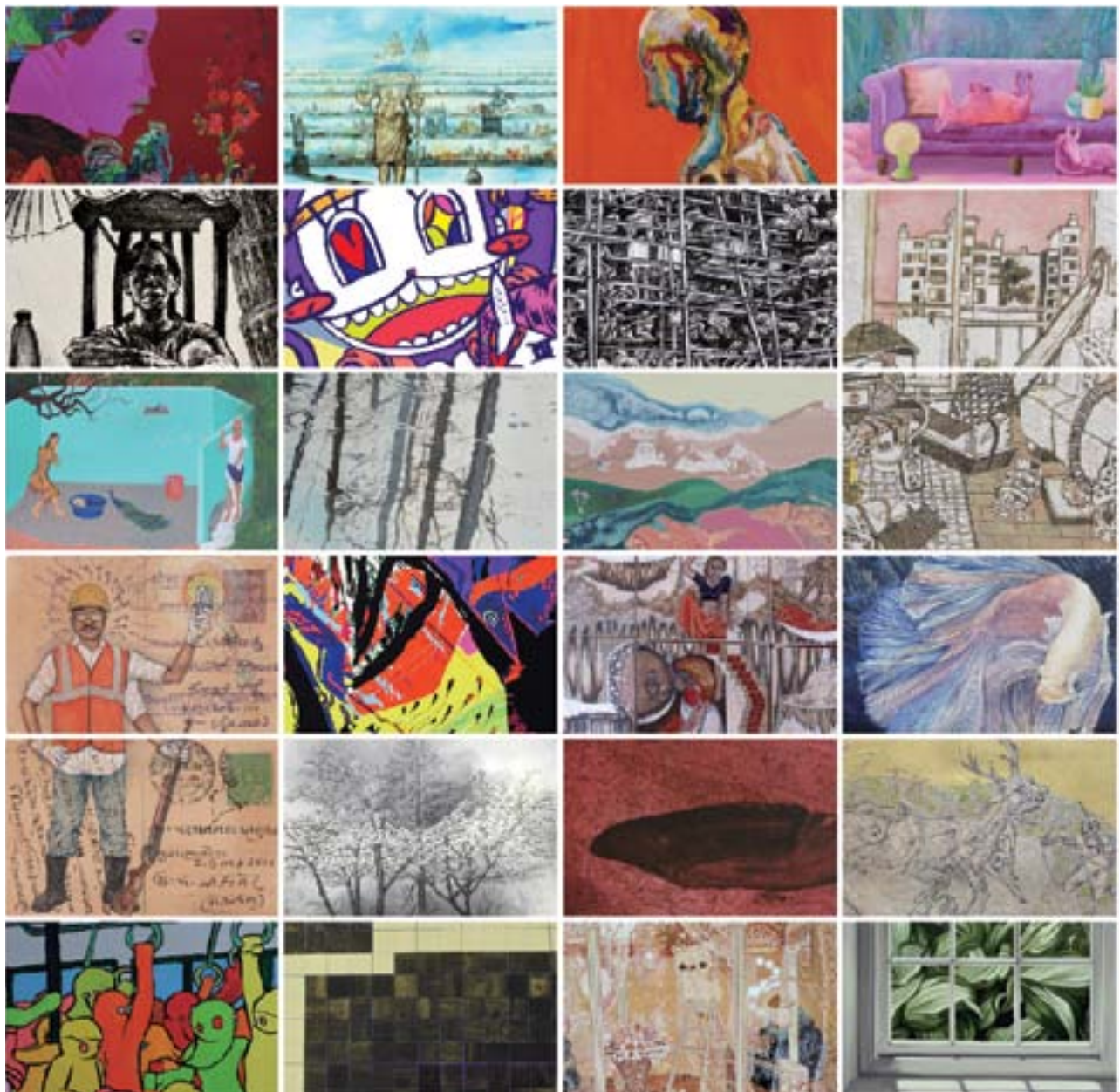
at Saarang, The Festival of India in Korea

The *Emerging Canvas* series, presented by InKo Centre in association with The Indian Art Museum in Seoul and Lalit Kala Akademi, India, aims to showcase the work of talented painters from India and Korea. As the title suggests, the artists are young, their talent emerging as does a butterfly from achrysalis, their potential obvious, their journey just beginning. *Emerging Canvas IV*, which will be presented at the **Indian Art Museum in Seoul** from **6-19 October 2016**, will present the work of 22 artists - 11 each from India and from Korea, whose work exudes both freshness of approach and finesse of technique. The exhibition will be included in Saarang, the Festival of India celebrations initiated by the Indian Embassy in Korea.

2016 제4회 한국 · 인도청년작가교류전



EMERGING CANVAS IV



Artists from INDIA



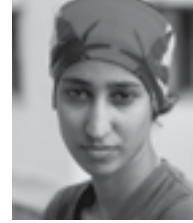
K. Rakshith



A. Vasudevan



*Treiborlang
Lyngdoh Mawlong*



Soghra Khurasani



Srinivasa Reddy



*Asmani
Shirgaonkar*



*Digbijayee
Khatua*



Sunanda Khajuria



Mantu Das



Sumana Som



Gangu Naidu

The Korean section of this exhibition has been curated with great care by the Indian Art Museum under the able stewardship of **Mrs Kim Young-Shik** who, over the past four decades, has dedicated her self to the promotion of Indian art and culture in general and of Rabindranath Tagore's work and philosophy, in particular, in Korea.

Ms Vaishnavi Ramanathan, curator and researcher with the Piramal Art Foundation, selected by Lalit Kala Akademi, has curated the Indian section of this exhibition with great diligence and empathy. She has ensured that artists from across India are represented in this exhibition and that the selection showcases the myriad visual languages that meld to reflect the variety and uniqueness of contemporary Indian art.

Artists from KOREA



Bang Gyu-tae



Choi Eun-bi



Jeong Ji-eun



Jeong Won-hyang



Jung Da-gyeom



Jung Yu-rim



Lee Da-hye



Lee Si-yeon



Lim Ji-beom



Lim Su-bin



Nam Ji-eun

Presented by :



in association with :

